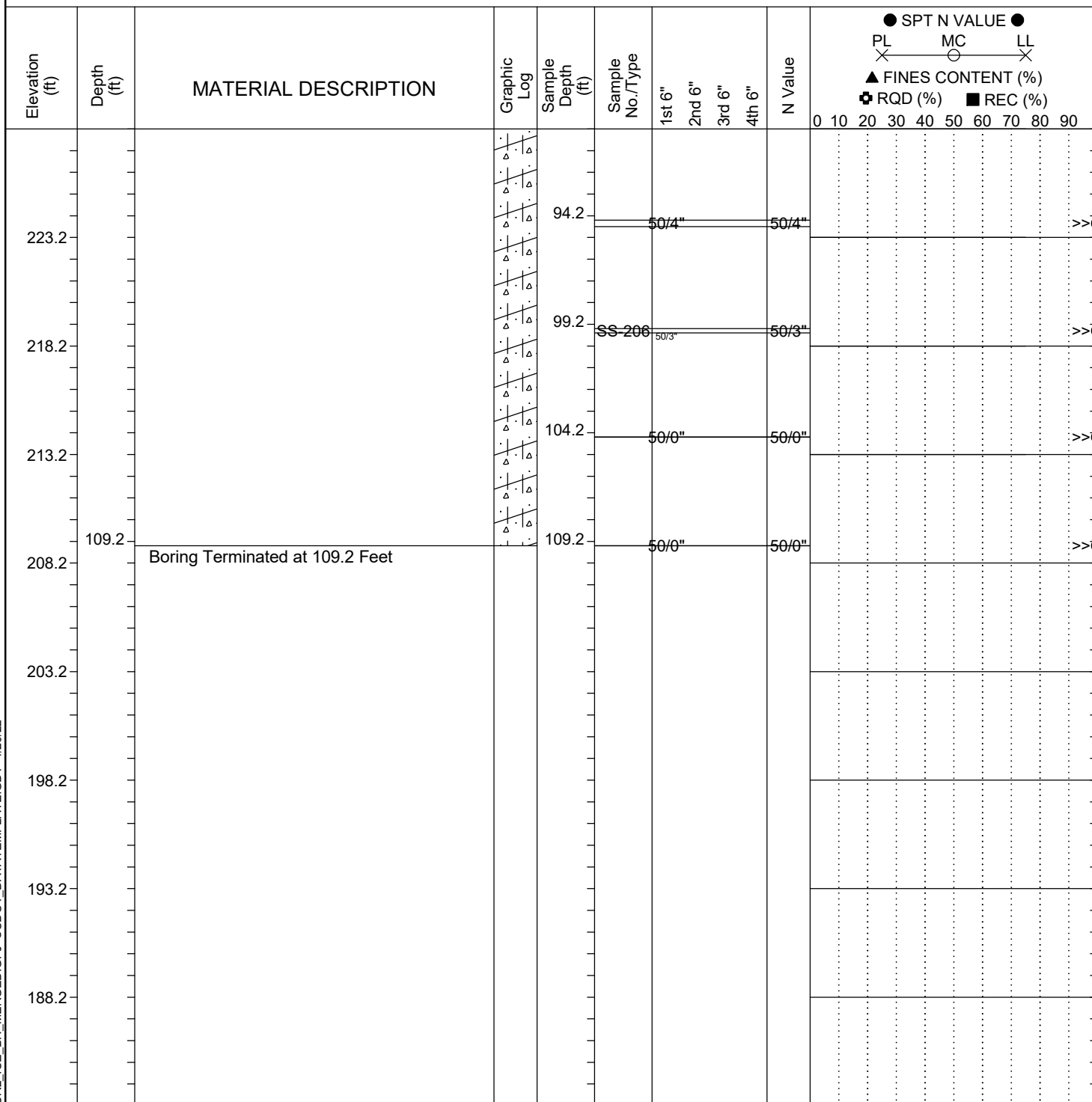


|                                 |  |                              |             |                        |                 |
|---------------------------------|--|------------------------------|-------------|------------------------|-----------------|
| <b>Project ID:</b>              | P039719                                  | <b>County:</b>               | Richland    | <b>Boring No.:</b>     | G-131           |
| <b>Site Description:</b>        | Carolina Crossroads Phase 2 - Bridge 42B |                              |             | <b>Route:</b>          | Broad River Rd. |
| <b>Eng./Geo.:</b>               | M. Stanbury                              | <b>Boring Location:</b>      | 203+85      | <b>Offset:</b>         | 118 LT          |
| <b>Elev.:</b>                   | 318.2 ft                                 | <b>Latitude:</b>             | 34.03979585 | <b>Longitude:</b>      | -81.09362896    |
| <b>Total Depth:</b>             | 109.2 ft                                 | <b>Soil Depth:</b>           | 109.2 ft    | <b>Date Started:</b>   | 2/23/2022       |
| <b>Core Depth:</b>              | N/A ft                                   | <b>Date Completed:</b>       | 2/23/2022   |                        |                 |
| <b>Bore Hole Diameter (in):</b> | 2.25                                     | <b>Sampler Configuration</b> |             | <b>Liner Required:</b> | Y (N)           |
| <b>Drill Machine:</b>           | D-50 #439                                | <b>Drill Method:</b>         | RW          | <b>Energy Ratio:</b>   | 90.8%           |
| <b>Core Size:</b>               | N/A                                      | <b>Driller:</b>              | R. Cassell  | <b>Groundwater:</b>    | TOB N/A         |
|                                 |  |                              |             | <b>24HR</b>            | 31.1 ft         |


**LEGEND**

| SAMPLER TYPE            |                        | DRILLING METHOD                |                  |
|-------------------------|------------------------|--------------------------------|------------------|
| SS - Split Spoon        | NQ - Rock Core, 1-7/8" | HSA - Hollow Stem Auger        | RW - Rotary Wash |
| UD - Undisturbed Sample | CU - Cuttings          | CFA - Continuous Flight Augers | RC - Rock Core   |
| AWG - Rock Core, 1-1/8" | CT - Continuous Tube   | DC - Driving Casing            |                  |